



Test Report No. F690101/LF-CTSAYAU12-02553

Issued Date: 2012. 05. 15 Page 1 of 3

To: KUMHO PETROCHEMICAL CO., LTD.
#680,
Sanggae-dong,
Nam-gu,
ULSAN
KOREA

The following merchandise was submitted and identified by the client as :

SGS File No. : AYAU12-02553
Product Name : RM 21
Item No./Part No. : N/A
Received Date : 2012. 05. 10
Test Period : 2012. 05. 11 to 2012. 05. 15
Test Results : For further details, please refer to following page(s)
Test Performed : SGS Korea tested the sample(s) selected by applicant with following results.

SGS Korea Co. Ltd. / Gimhae Laboratory

Sharpless Park
Jonadan Lee
Taehee Kang
Jongsir Lim/Testing Person

Thomas Hwang / Gimhae Lab. Mgr



Test Report No. F690101/LF-CTSAYAU12-02553

Issued Date: 2012. 05. 15 Page 2 of 3

Sample No. : AYAU12-02553.001

Sample Description : RM 21

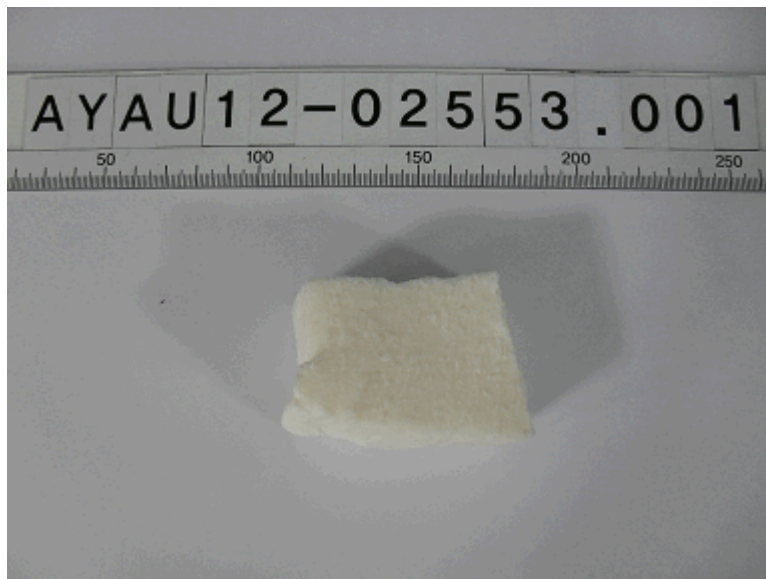
Item No./Part No. : N/A

Materials : N/A

Heavy Metals

Test Items	Unit	Test Method	MDL	Results
Cadmium (Cd)	mg/kg	With reference to IEC 62321:2008, ICP	1	N.D.
Lead (Pb)	mg/kg	With reference to IEC 62321:2008, ICP	5	N.D.
Mercury (Hg)	mg/kg	With reference to IEC 62321:2008, ICP	2	N.D.
Hexavalent Chromium (Cr VI)	mg/kg	With reference to IEC 62321:2008, UV-VIS	1	N.D.

Picture of Sample as Received:



NOTE:(1) N.D. = Not detected.(<MDL)

(2) mg/kg = ppm

(3) MDL = Method Detection Limit

(4) - = No regulation

(5) Negative = Undetectable / Positive = Detectable

(6) ** = Qualitative analysis (No Unit)

(7) * = Boiling-water-extraction:

Negative = Absence of CrVI coating

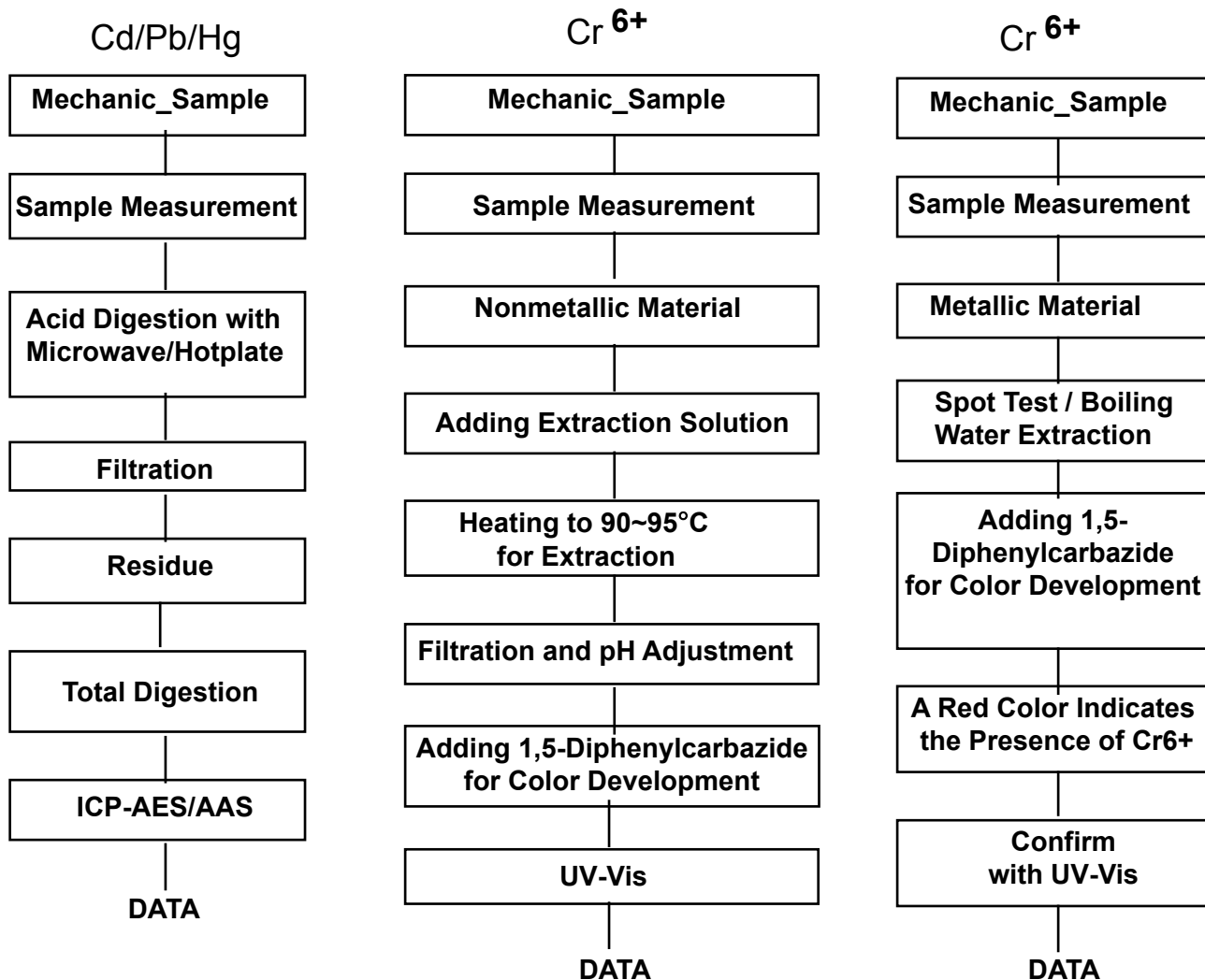
Positive = Presence of CrVI coating; the detected concentration in boiling-water-extraction solution is equal or greater than 0.02 mg/kg with 50 cm² sample surface area.

This document is issued by the Company subject to its General Conditions of Service printed overleaf, available on request or accessible at www.sgs.com/terms_and_conditions.htm and, for electronic format documents, subject to Terms and Conditions for Electronic Documents at www.sgs.com/terms_e-document.htm. Attention is drawn to the limitation of liability, indemnification and jurisdiction issues defined therein. Any holder of this document is advised that information contained hereon reflects the Company's findings at the time of its intervention only and within the limits of Client's instructions, if any. The Company's sole responsibility is to its Client and this document does not exonerate parties to a transaction from exercising all their rights and obligations under the transaction documents. This document cannot be reproduced except in full, without prior written approval of the Company. Any unauthorized alteration, forgery or falsification of the content or appearance of this document is unlawful and offenders may be prosecuted to the fullest extent of the law.

Unless otherwise stated the results shown in this test report refer only to the sample(s) tested and such sample(s) are retained for 180 days only.



Testing Flow Chart for RoHS: Cd/Pb/Hg/Cr⁶⁺ Testing



The samples were dissolved totally by pre-conditioning method according to above flow chart for Cd,Pb,Hg.
Section Chief : Sharpless Park

*** End ***

NOTE:(1) N.D. = Not detected.(<MDL)

(2) mg/kg = ppm

(3) MDL = Method Detection Limit

(4) - = No regulation

(5) Negative = Undetectable / Positive = Detectable

(6) ** = Qualitative analysis (No Unit)

(7) * = Boiling-water-extraction:

Negative = Absence of CrVI coating

Positive = Presence of CrVI coating; the detected concentration in boiling-water-extraction solution is equal or greater than 0.02 mg/kg with 50 cm² sample surface area.